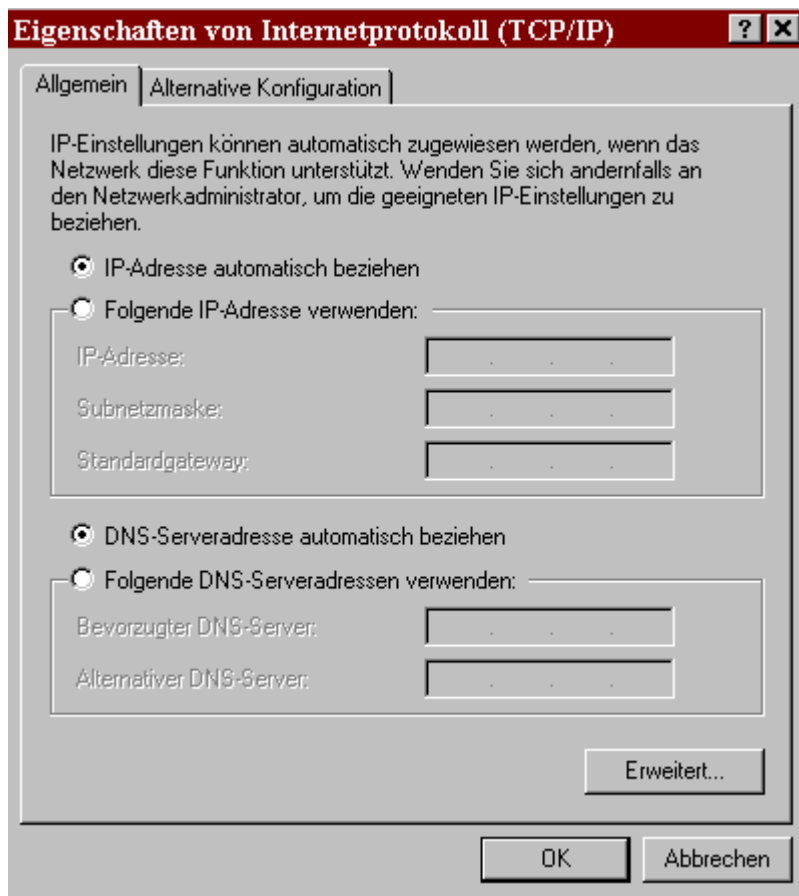




Installation St@rkey for ProgDVB

1. Unzip the following ZIP-file to a folder on your local harddisk, e.g. C:\Starkey, which you can download from the following link:
<http://www.dvbshop.net/STAR.zip>
2. Connect the Starkey via USB with your PC
3. Windows(XP) will then ask for drivers. Don't choose the „automatic installation“, but refer Windows to this folder manually on your harddisk, in this example C:\Starkey
4. Drivers will now be installed! (Note, that WindowsXP might bring up somekind of an „error“, that the driver is not digitally signed. Just click on „Install anyway“)
5. Pay attention to the „network-icon“ appearing in your taskbar (beside the clock on your Desktop). If it's signed with an exclamation mark and or tells you, that this device has „limited connectivity“, doubleclick on that icon! Then go into SETTINGS and TCP/IP settings. Then assign a manual IP address to this networkdevice and the appropriate Subnetmask, like example below:



This has to be changed to the following settings (example):



Choose an IP-address, which is NOT used already in your homenetwork! But you MUST choose the same subnetmask, which is normally suggested by the system automatically, when entering a manual IP address. You can find out, which IP addresses are in use by clicking “START -> EXECUTE” and then IPCONFIG. This will popup a windows like example below:

```

Eingabeaufforderung

Verbindungsspezifisches DNS-Suffix:
IP-Adresse . . . . . : 192.168.0.2
Subnetzmaske . . . . . : 255.255.255.0
Standardgateway . . . . . : 192.168.0.1

Ethernetadapter LAN-Verbindung 4:

Medienstatus. . . . . : Es besteht keine Verbindung

Ethernetadapter LAN-Verbindung 2:

Verbindungsspezifisches DNS-Suffix:
IP-Adresse (Autokonfig.) . . . . . : 192.168.46.21
Subnetzmaske . . . . . : 255.255.255.0
Standardgateway . . . . . :

Ethernetadapter LAN-Verbindung 14:

Verbindungsspezifisches DNS-Suffix:
IP-Adresse . . . . . : 192.168.120.254
Subnetzmaske . . . . . : 255.255.255.0
Standardgateway . . . . . :

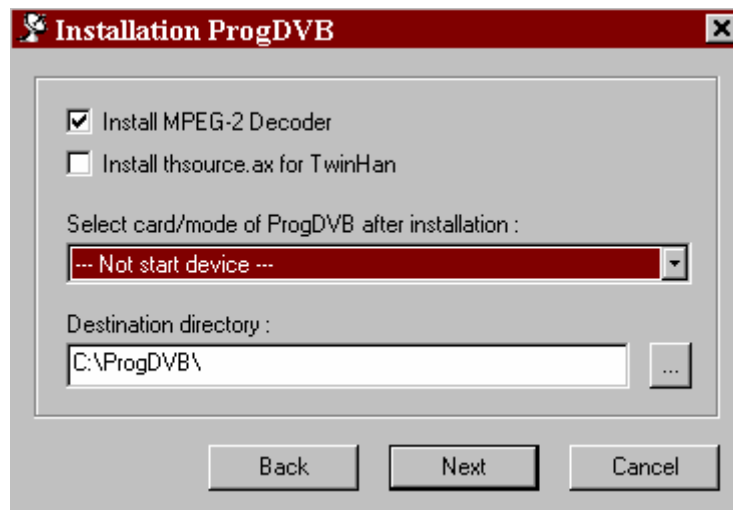
```

Above you can see, which IP addresses are already used. You also see, that all devices uses the same subnetmask (important!)

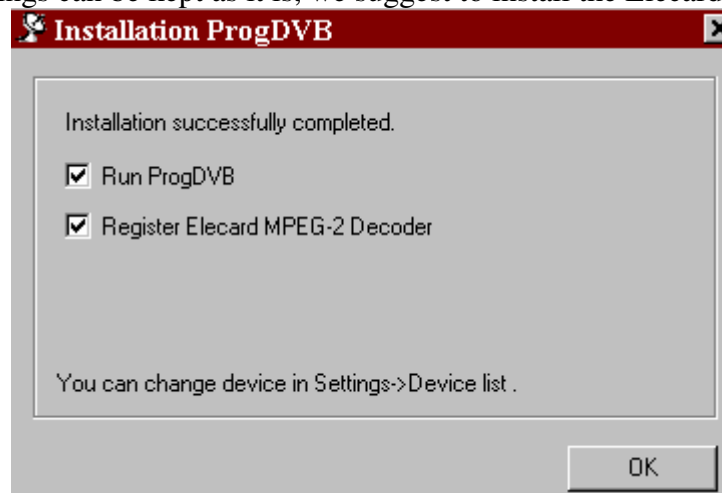
If you are done with these settings, click „OK“ and the exclamation mark should disappear in taskbar.

6. Insert the CD, shipped with the USB Box. Open it with the filexplorer and go into the TOOLS folder/directory. Doubleclick on the FLASH4ME file

7. Program will start. Click on CHOOSE and chose the Flashfile, in this case „starkey_4-0gS.hex“. Set the checkbox before the “Update Application” field and then click on „Flash New Code“. After a few seconds it should confirm the Flashupdate for Starkey.
8. Install the latest ProgDVB Version, which you can download from here:
<http://www.progdvb.com/download.htm>
9. Please use the suggested install-paths from ProgDVB Setup-routine and choose under „Select card/mode of ProgDVB“ --- Not start device ---



10. All the other settings can be kept as it is, we suggest to install the Elecard MPEG2 Decoder



11. Then close ProgDVB.
12. In our Downloadfile you will have 2 files in your C:\Starkey directory: Sat4Me.dll and StarKey.DEVICE.
13. Then place the following command into START->EXECUTE:

Regsvr32 /u C:\Starkey\Sat4Me.dll and click OK

Then place again under START -> EXECUTE the followinf command:

Regsvr32 C:\Starkey\Sat4Me.dll und and click ok

The following window should show up and confirms the registry entry:



After that copy the file Starkey.DEVICE into the ProgDVB Modules directory, in the standard case C:\ProgDVB\Modules\

14. Now you can start ProgDVB and choose under SETTINGS -> DEVICE LIST the Starkey-Device and click to start/initialize it.
15. The box is now ready and activated – under SETTINGS -> DISEQC you have to setup your LNB and satellitesystem. For Astra 19.2° you have to choose the LNB-type (in this case Satellitelist 0192, for Hotbird 13° it is 0130 etc.).
16. Under Channel-Search you may scan transponders or the complete satellite.

Thanks for buying at DVBSHOP.net!

© 2006/2007 by Axel Hundt, DVBSHOP Network and Television GmbH

<http://www.dvbshop.net>
<http://www.dvbshop.net/forum>